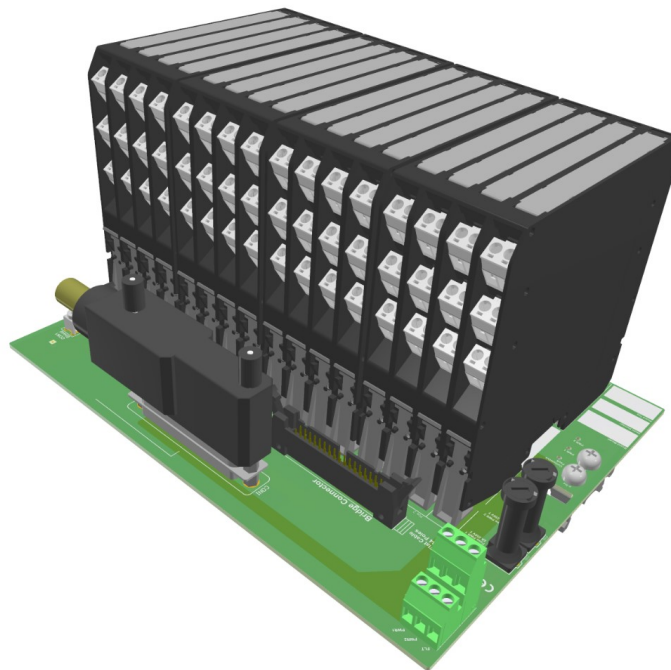


Terminales personalizados para series D5000/D6000

FOXBORO FBM200

Estos terminales (TB) ofrecen una conexión directa entre la tarjeta I/O del sistema y los módulos de la serie D5000 / D6000, que se conectan mediante interfaz en el campo. El aparato asociado de la serie D5000 ofrece una protección intrínsecamente segura y un aislamiento de la señal entre áreas segura y peligrosa. Las dos alimentaciones de potencia de 24 Vdc están conectadas al TB para reforzar la redundancia. Un contacto específico permite efectuar un seguimiento de alimentaciones de potencia fuera de intervalo y fallo de módulo acumulativo. Los módulos son alimentados mediante el bus de alimentación de los terminales. La versión TB incluye un kit de montaje de rail DIN con pinzas de plástico.



Entrada analógica

I/O Cards	Card Ch.	TB Model	TB Pos.	GMI Modules	Card Qty.	Cable	Notes
FBM201 FBM214 FBM214b FBM216 FBM216b	8	TB-D5008-INV-002	8	D5011S, D5014S, D5015SS, D5016SS, D5072S	1	Tipo 1	
FBM201 FBM214 FBM214b FBM216 FBM216b	8	TB-D5008-INV-002	8	D5011D, D5014D, D5016DS, D5072D	2	Tipo 1	Numeración de canal 1A,...8A en CON1 1B,...8B en CON2
FBM201 FBM214 FBM214b FBM216 FBM216b	8	TB-D5008-INV-004	8	D5011D, D5014D, D5016DS, D5072D	2	Tipo 1	Numeración de canal 1A,1B...4A,4B en CON1 5A,5B...8A,8B en CON2
FBM211 FBM214e	16	TB-D5016-INV-004	16	D5011S, D5014S, D5015SS, D5016SS, D5072S	1	Tipo 4	
FBM211 FBM214e	16	TB-D5016-INV-004	16	D5011D, D5014D, D5016DS, D5072D	2	Tipo 4	
FBM211 FBM214e	16	TB-D5008-INV-001	8	D5011D, D5014D, D5016DS, D5072D	1	Tipo 4	

Salida analógica

I/O Cards	Card Ch.	TB Model	TB Pos.	GMI Modules	Card Qty.	Cable	Notes
FBM215 FBM218 FBM237	8	TB-D5008-INV-002	8	D5020S	1	Tipo 1	
FBM215 FBM218 FBM237	8	TB-D5008-INV-002	8	D5020D	2	Tipo 1	Numeración de canal 1A,...8A en CON1 1B,...8B en CON2
FBM215 FBM218 FBM237	8	TB-D5008-INV-004	8	D5020D	2	Tipo 1	Numeración de canal 1A,1B...4A,4B CON1 5A,5B...8A,8B CON2

Entrada analógica + Salida analógica

I/O Cards	Card Ch.	TB Model	TB Pos.	GMI Modules	Card Qty.	Cable	Notes
FBM244	4+4	TB-D5008-INV-002	8	D5011S, D5014S, D5015SS, D5016SS, D5072S + D5020S	1	Tipo 1	
FBM244	4+4	TB-D5008-INV-002	8	D5011D, D5014D, D5016DS, D5072D + D5020D	2	Tipo 1	Numeración de canal 5A,...,8A,1A,...,4A en CON1 5B,...,8B,1B,..., 4B en CON2
FBM244	4+4	TB-D5008-INV-004	8	D5011D, D5014D, D5016DS, D5072D + D5020D	2	Tipo 1	Numeración de canal 5A,5B,...,8A, 8B en CON1 1A, 1B,...,4A,4B en CON2
FBM204 FBM205 FBM208b FBM245	4+4	TB-D5008-INV-002	8	D5011S, D5014S, D5015SS, D5016SS, D5072S + D5020S	1	Tipo 1	
FBM204 FBM205 FBM208b FBM245	4+4	TB-D5008-INV-002	8	D5011D, D5014D, D5016DS, D5072D + D5020D	2	Tipo 1	Numeración de canal 5A,...,8A,1A,...,4A en CON1 5B,...,8B,1B,..., 4B en CON2
FBM204 FBM205 FBM208b FBM245	4+4	TB-D5008-INV-004	8	D5011D, D5014D, D5016DS, D5072D + D5020D	2	Tipo 1	Numeración de canal 5A,5B,...,8A, 8B en CON1 1A, 1B,...,4A,4B en CON2

Entrada digital

I/O Cards	Card Ch.	TB Model	TB Pos.	GMI Modules	Card Qty.	Cable	Notes
FBM207b	16	TB-D5016-INV-007	16	D5031S, D5032S, D5037S	1	Tipo 4	
FBM207b	16	TB-D5016-INV-007	16	D5031D, D5032D, D5037D	2	Tipo 4	



I/O Cards	Card Ch.	TB Model	TB Pos.	GMI Modules	Card Qty.	Cable	Notes
FBM207b	16	TB-D5008-INV-001	8	D5032D	1	Tipo 4	
FBM207c	16	TB-D5008-INV-001	8	D5032D	1	Tipo 4	
FBM207c	16	TB-D5016-INV-007	16	D5032S	1	Tipo 4	
FBM207c	16	TB-D5016-INV-007	16	D5032D	2	Tipo 4	
FBM217	32	TB-D5016-INV-005	16+16	D5031S, D5032S, D5037S	1	Tipo 4	
FBM217	32	TB-D5016-INV-002	16	D5031D, D5032D, D5037D	1	Tipo 4	Numeración de canal 1A,...16A,1B,...16B
FBM217	32	TB-D5016-INV-006	16	D5031D, D5032D, D5037D	1	Tipo 4	Numeración de canal 1A,1B,...,16A,16B

Salida digital

I/O Cards	Card Ch.	TB Model	TB Pos.	GMI Modules	Card Qty.	Cable	Notes
FBM242	16	TB-D5016-INV-003	16	D5040S, D5048S, D5049S	1	Tipo 4	
FBM242	16	TB-D5016-INV-003	16	D5040D	2	Tipo 4	
FBM242	16	TB-D5016-INV-003-2	16	D5040S, D5048S, D5049S	1	Tipo 4	Los actuadores pueden desconectarse de manera individual

Entrada digital + Salida digital

I/O Cards	Card Ch.	TB Model	TB Pos.	GMI Modules	Card Qty.	Cable	Notes
FBM241c	8+8	TB-D5012-INV-001	12	D5031D, D5032D, D5037D + D5040S, D5048S, D5049S	1	Tipo 4	4 canales dobles DI + 8 canales individuales DO

Universal

I/O Cards	Card Ch.	TB Model	TB Pos.	GMI Modules	Card Qty.	Cable	Notes
FBM247 FBM248	8	TB-D5008-INV-005	8	D5014S, D5015SK, D5016SK, D5072S-099, D5020S, D5031S, D5032S, D5037S, D5049S	1	Tipo 1	

Entrada analógica

I/O Cards	Card Ch.	TB Model	TB Pos.	GMI Modules	Card Qty.	Cable	Notes
FBM201 FBM214 FBM214b FBM216 FBM244	8	TB-D5008-INV-002	8	D6002S, D6004S, D6011S, D6014S, D6015SS, D6016SS, D6017SS, D6072S	1	Tipo 1	
FBM201 FBM214 FBM214b FBM216 FBM244	8	TB-D5008-INV-002	8	D6000D, D6004D, D6011D, D6014D, D6016DS, D6072D	2	Tipo 1	Numeración de canal 1A,...8A en CON1 1B,...8B en CON2
FBM201 FBM214 FBM214b FBM216 FBM244	8	TB-D5008-INV-004	8	D6000D, D6004D, D6011D, D6014D, D6016DS, D6072D	2	Tipo 1	Numeración de canal 1A,1B...4A,4B en CON1 5A,5B...8A,8B en CON2
FBM211 FBM214e	16	TB-D5016-INV-004	16	D6002S, D6004S, D6011S, D6014S, D6015SS, D6016SS, D6017SS, D6072S	1	Tipo 4	
FBM211 FBM214e	16	TB-D5016-INV-004	16	D6000D, D6004D, D6011D, D6014D, D6016DS, D6072D	2	Tipo 4	
FBM211 FBM214e	16	TB-D5008-INV-001	8	D6000D, D6004D, D6011D, D6014D, D6016DS, D6072D	1	Tipo 4	
FBM211 FBM214e	16	TUE-16-INV-001			1	Tipo 4	Sin módulos, conexión directa a campo

Salida analógica

I/O Cards	Card Ch.	TB Model	TB Pos.	GMI Modules	Card Qty.	Cable	Notes
FBM237 FBM215 FBM218	8	TB-D5008-INV-002	8	D6002S, D6020S	1	Tipo 1	
FBM237 FBM215 FBM218	8	TB-D5008-INV-002	8	D6000D, D6020D	2	Tipo 1	Numeración de canal 1A,...8A en CON1 1B,...8B en CON2
FBM237 FBM215 FBM218	8	TB-D5008-INV-004	8	D6000D, D6020D	2	Tipo 1	Numeración de canal 1A,1B...4A,4B en CON1 5A,5B...8A,8B en CON2

Entrada analógica + Salida analógica

I/O Cards	Card Ch.	TB Model	TB Pos.	GMI Modules	Card Qty.	Cable	Notes
FBM204 FBM205 FBM208b FBM244 FBM245	4+4	TB-D5008-INV-002	8	D6002S, D6004S, D6011S, D6014S, D6015SS, D6016SS, D6017SS + D6020S	1	Tipo 1	
FBM204 FBM205 FBM208b FBM244 FBM245	4+4	TB-D5008-INV-002	8	D6000D, D6004D, D6011D, D6014D, D6016DS, D6072D + D6020D	2	Tipo 1	Numeración de canal 5A,...,8A,1A,...,4A en CON1 5B,...,8B,1B,..., 4B en CON2
FBM204 FBM205 FBM208b FBM244 FBM245	4+4	TB-D5008-INV-004	8	D6000D, D6004D, D6011D, D6014D, D6016DS, D6072D + D6020D	2	Tipo 1	Numeración de canal 5A,5B,...,8A, 8B en CON1 1A, 1B,...,4A,4B en CON2

Entrada digital

I/O Cards	Card Ch.	TB Model	TB Pos.	GMI Modules	Card Qty.	Cable	Notes
FBM207b	16	TB-D5016-INV-007	16	D6002S, D6031S, D6032S, D6037S, D5093S	1	Tipo 4	
FBM207b	16	TB-D5016-INV-007	16	D6000D, D6031D, D6032D, D6037D, D5093D	2	Tipo 4	
FBM207b	16	TB-D5008-INV-001	8	D6000D, D6032D, D5093D	1	Tipo 4	

I/O Cards	Card Ch.	TB Model	TB Pos.	GMI Modules	Card Qty.	Cable	Notes
FBM207c	16	TB-D5008-INV-001	8	D6032D	1	Tipo 4	
FBM207c	16	TB-D5016-INV-007	16	D6032S	1	Tipo 4	
FBM207c	16	TB-D5016-INV-007	16	D6032D	2	Tipo 4	
FBM217	32	TB-D5016-INV-005	16+16	D6002S, D6031S, D6032S, D6037S, D5093S	1	Tipo 4	
FBM217	32	TB-D5016-INV-002	16	D6000D, D6031D, D6032D, D6037D, D5093D	1	Tipo 4	Numeración de canal 1A,...16A,1B,...16B
FBM217	32	TB-D5016-INV-006	16	D6000D, D6031D, D6032D, D6037D, D5093D	1	Tipo 4	Numeración de canal 1A,1B,...16A,16B
FBM217	32	TUE-32-INV-001			1	Tipo 4	Sin módulos, conexión directa a campo

Salida digital

I/O Cards	Card Ch.	TB Model	TB Pos.	GMI Modules	Card Qty.	Cable	Notes
FBM242	16	TB-D5016-INV-003	16	D5090S, D5091S, D5094S, D5095S, D5096S, D5097S, D5098S, D5099S-108, D6002S, D6003S	1	Tipo 4	
FBM242	16	TB-D5016-INV-003	16	D5098D, D5099D-108, D6000D	2	Tipo 4	
FBM242	16	TB-D5016-INV-003-2	16	D5090S, D5091S, D5094S, D5095S, D5096S, D5097S, D5098S, D5099S-108, D6002S, D6003S	1	Tipo 4	Los actuadores pueden desconectarse de manera individual

Entrada digital + Salida digital

I/O Cards	Card Ch.	TB Model	TB Pos.	GMI Modules	Card Qty.	Cable	Notes
FBM241c	8+8	TB-D5012-INV-001	12	D5093D, D6000D, D6031D, D6032D, D6037D + D5090S, D5091S, D5094S, D5095S, D5096S, D5097S, D5098S, D5099S-108, D6002S, D6003S	1	Tipo 4	4 canales dobles DI + 8 canales individuales DO

Universal

I/O Cards	Card Ch.	TB Model	TB Pos.	GMI Modules	Card Qty.	Cable	Notes
FBM247 FBM248	8	TB-D5008-INV-005	8	D5093S-TB, D5099S, D6002S, D6003S, D6004S, D6014S, D6015SK, D6016SK, D6017SK-TB, D6020S, D6031S, D6032S, D6037S, D6072S-109	1	Tipo 1	