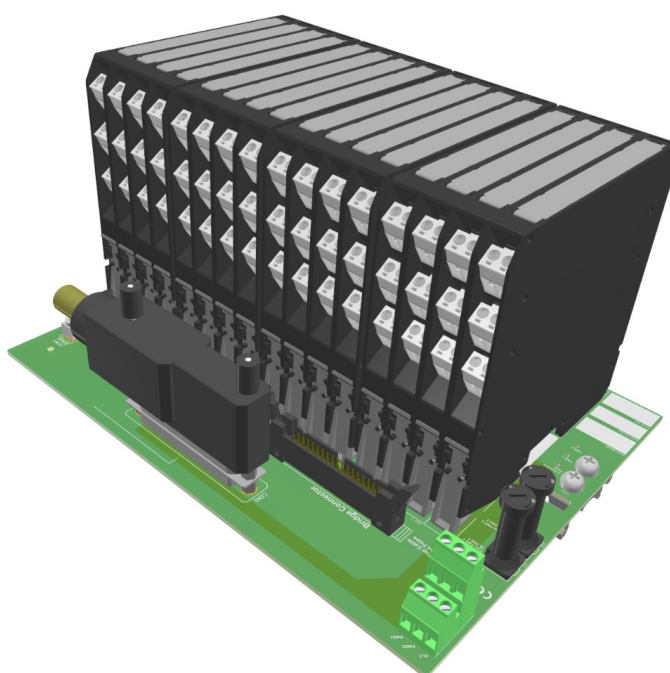


## 定制化端子板 D5000/D6000 系列

# FOXBORO FBM200

这些端子板 (TB) 在具有现场接口的系统 I/O 卡和 D5000/D6000 系列模块之间提供直接连接。安全区和危险区之间的本质安全保护和信号隔离由 D5000 系列相关设备提供。两个 24 Vdc 电源被连接至端子板上以执行冗余程序指令。可以通过专用触点监控电源是否超出范围和是否存在累积模块故障。模块通过端子板电源总线供电。端子板随附带有塑料夹的 DIN 导轨安装套件。



模拟量输入

I/O Cards	Card Ch.	TB Model	TB Pos.	GMI Modules	Card Qty.	Cable	Notes
FBM201 FBM214 FBM214b FBM216 FBM216b	8	TB-D5008-INV-002	8	D5011SD5014S D5015SSD5016SS D5072S	1	1	
FBM201 FBM214 FBM214b FBM216 FBM216b	8	TB-D5008-INV-002	8	D5011DD5014D D5016DSD5072D	2	1	1A...8A CON11B...8B CON2
FBM201 FBM214 FBM214b FBM216 FBM216b	8	TB-D5008-INV-004	8	D5011DD5014D D5016DSD5072D	2	1	1A1B...4A4B CON15A5B... 8A8B CON2
FBM211 FBM214e	16	TB-D5016-INV-004	16	D5011SD5014S D5015SSD5016SS D5072S	1	4	
FBM211 FBM214e	16	TB-D5016-INV-004	16	D5011DD5014D D5016DSD5072D	2	4	
FBM211 FBM214e	16	TB-D5008-INV-001	8	D5011DD5014D D5016DSD5072D	1	4	

模拟量输出

I/O Cards	Card Ch.	TB Model	TB Pos.	GMI Modules	Card Qty.	Cable	Notes
FBM215 FBM218 FBM237	8	TB-D5008-INV-002	8	D5020S	1	1	
FBM215 FBM218 FBM237	8	TB-D5008-INV-002	8	D5020D	2	1	1A...8A CON11B...8B CON2
FBM215 FBM218 FBM237	8	TB-D5008-INV-004	8	D5020D	2	1	1A1B...4A4B CON15A5B... 8A8B CON2

模拟量输入 + 模拟量输出

I/O Cards	Card Ch.	TB Model	TB Pos.	GMI Modules	Card Qty.	Cable	Notes
FBM244	4+4	TB-D5008-INV-002	8	D5011SD5014S D5015SSD5016SS D5072S + D5020S	1	1	
FBM244	4+4	TB-D5008-INV-002	8	D5011DD5014D D5016DSD5072D + D5020D	2	1	5A...8A1A... 4A CON1 5B...8B1B... 4B CON2
FBM244	4+4	TB-D5008-INV-004	8	D5011DD5014D D5016DSD5072D + D5020D	2	1	5A5B...8A8B CON11A 1B...4A4B CON2
FBM204 FBM205 FBM208b FBM245	4+4	TB-D5008-INV-002	8	D5011SD5014S D5015SSD5016SS D5072S + D5020S	1	1	
FBM204 FBM205 FBM208b FBM245	4+4	TB-D5008-INV-002	8	D5011DD5014D D5016DSD5072D + D5020D	2	1	5A...8A1A... 4A CON1 5B...8B1B... 4B CON2
FBM204 FBM205 FBM208b FBM245	4+4	TB-D5008-INV-004	8	D5011DD5014D D5016DSD5072D + D5020D	2	1	5A5B...8A8B CON11A 1B...4A4B CON2



## 数字量输入

I/O Cards	Card Ch.	TB Model	TB Pos.	GMI Modules	Card Qty.	Cable	Notes
FBM207b	16	TB-D5016-INV-007	16	D5031SD5032SD5037S	1	4	
FBM207b	16	TB-D5016-INV-007	16	D5031DD5032DD5037D	2	4	
FBM207b	16	TB-D5008-INV-001	8	D5032D	1	4	
FBM207c	16	TB-D5008-INV-001	8	D5032D	1	4	
FBM207c	16	TB-D5016-INV-007	16	D5032S	1	4	
FBM207c	16	TB-D5016-INV-007	16	D5032D	2	4	
FBM217	32	TB-D5016-INV-005	16+16	D5031SD5032SD5037S	1	4	
FBM217	32	TB-D5016-INV-002	16	D5031DD5032DD5037D	1	4	1A...16A1B...16B
FBM217	32	TB-D5016-INV-006	16	D5031DD5032DD5037D	1	4	1A1B...16A16B

## 数字量输出

I/O Cards	Card Ch.	TB Model	TB Pos.	GMI Modules	Card Qty.	Cable	Notes
FBM242	16	TB-D5016-INV-003	16	D5040SD5048SD5049S	1	4	
FBM242	16	TB-D5016-INV-003	16	D5040D	2	4	
FBM242	16	TB-D5016-INV-003-2	16	D5040SD5048SD5049S	1	4	

## 数字量输入 + 数字量输出

I/O Cards	Card Ch.	TB Model	TB Pos.	GMI Modules	Card Qty.	Cable	Notes
FBM241c	8+8	TB-D5012-INV-001	12	D5031DD5032DD5037D + D5040SD5048SD5049S	1	4	4 DI + 8 DO

## 通用

I/O Cards	Card Ch.	TB Model	TB Pos.	GMI Modules	Card Qty.	Cable	Notes
FBM247 FBM248	8	TB-D5008-INV-005	8	D5014SD5015SK D5016SKD5072S-099 D5020SD5031SD5032S D5037SD5049S	1	1	

## FOXBORO FBM200

### 非 IS 应用程序

#### 模拟量输入

I/O Cards	Card Ch.	TB Model	TB Pos.	GMI Modules	Card Qty.	Cable	Notes
FBM201 FBM214 FBM214b FBM216 FBM244	8	TB-D5008-INV-002	8	D6002SD6004SD6011S D6014SD6015SS D6016SSD6017SS D6072S	1	1	
FBM201 FBM214 FBM214b FBM216 FBM244	8	TB-D5008-INV-002	8	D6000DD6004DD6011D D6014DD6016DSD6072D	2	1	1A...8A CON11B...8B CON2
FBM201 FBM214 FBM214b FBM216 FBM244	8	TB-D5008-INV-004	8	D6000DD6004DD6011D D6014DD6016DSD6072D	2	1	1A1B...4A4B CON15A5B... 8A8B CON2
FBM211 FBM214e	16	TB-D5016-INV-004	16	D6002SD6004SD6011S D6014SD6015SS D6016SSD6017SS D6072S	1	4	
FBM211 FBM214e	16	TB-D5016-INV-004	16	D6000DD6004DD6011D D6014DD6016DSD6072D	2	4	
FBM211 FBM214e	16	TB-D5008-INV-001	8	D6000DD6004DD6011D D6014DD6016DSD6072D	1	4	
FBM211 FBM214e	16	TUE-16-INV-001			1	4	

#### 模拟量输出

I/O Cards	Card Ch.	TB Model	TB Pos.	GMI Modules	Card Qty.	Cable	Notes
FBM237 FBM215 FBM218	8	TB-D5008-INV-002	8	D6002SD6020S	1	1	
FBM237 FBM215 FBM218	8	TB-D5008-INV-002	8	D6000DD6020D	2	1	1A...8A CON11B...8B CON2
FBM237 FBM215 FBM218	8	TB-D5008-INV-004	8	D6000DD6020D	2	1	1A1B...4A4B CON15A5B... 8A8B CON2

#### 模拟量输入 + 模拟量输出

I/O Cards	Card Ch.	TB Model	TB Pos.	GMI Modules	Card Qty.	Cable	Notes
FBM204 FBM205 FBM208b FBM244 FBM245	4+4	TB-D5008-INV-002	8	D6002SD6004SD6011S D6014SD6015SS D6016SSD6017SS + D6020S	1	1	
FBM204 FBM205 FBM208b FBM244 FBM245	4+4	TB-D5008-INV-002	8	D6000DD6004DD6011D D6014DD6016DSD6072D + D6020D	2	1	5A...8A1A... 4A CON1 5B...8B1B... 4B CON2
FBM204 FBM205 FBM208b FBM244 FBM245	4+4	TB-D5008-INV-004	8	D6000DD6004DD6011D D6014DD6016DSD6072D + D6020D	2	1	5A5B...8A8B CON11A 1B...4A4B CON2

#### 数字量输入

I/O Cards	Card Ch.	TB Model	TB Pos.	GMI Modules	Card Qty.	Cable	Notes
FBM207b	16	TB-D5016-INV-007	16	D6002SD6031SD6032S D6037SD5093S	1	4	
FBM207b	16	TB-D5016-INV-007	16	D6000DD6031DD6032D D6037DD5093D	2	4	
FBM207b	16	TB-D5008-INV-001	8	D6000DD6032DD5093D	1	4	

Temp. TMP0057 Rev.0

[www.gminternational.com](http://www.gminternational.com)



功能安全管理认证：GM International 通过认证符合 IEC61508:2010 安全相关系统的第 1 部分第 5--6 条，达到并包括 SIL3。此外，GM International 产品已获得世界上最受信任的认证机构颁发的 I.S. 证书。

本文件中规定的数据仅是对产品的描述，应结合相关技术参数应用。我们的产品还在持续开发，这里的信息是指文件发布时间的信息。无法从我们的信息中获得有关特定条件或特定应用适用性的声明。所提供的信息并不能免除用户自行判断和核实的义务。可以在我们的网站上找到相关条款和条件。有关更多信息，请参阅说明书。

I/O Cards	Card Ch.	TB Model	TB Pos.	GMI Modules	Card Qty.	Cable	Notes
FBM207c	16	TB-D5008-INV-001	8	D6032D	1	4	
FBM207c	16	TB-D5016-INV-007	16	D6032S	1	4	
FBM207c	16	TB-D5016-INV-007	16	D6032D	2	4	
FBM217	32	TB-D5016-INV-005	16+16	D6002SD6031SD6032S D6037SD5093S	1	4	
FBM217	32	TB-D5016-INV-002	16	D6000DD6031DD6032D D6037DD5093D	1	4	1A...16A1B...16B
FBM217	32	TB-D5016-INV-006	16	D6000DD6031DD6032D D6037DD5093D	1	4	1A1B...16A16B
FBM217	32	TUE-32-INV-001			1	4	

#### 数字量输出

I/O Cards	Card Ch.	TB Model	TB Pos.	GMI Modules	Card Qty.	Cable	Notes
FBM242	16	TB-D5016-INV-003	16	D5090SD5091SD5094S D5095SD5096SD5097S D5098SD5099S-108 D6002SD6003S	1	4	
FBM242	16	TB-D5016-INV-003	16	D5098DD5099D-108 D6000D	2	4	
FBM242	16	TB-D5016-INV-003-2	16	D5090SD5091SD5094S D5095SD5096SD5097S D5098SD5099S-108 D6002SD6003S	1	4	

#### 数字量输入 + 数字量输出

I/O Cards	Card Ch.	TB Model	TB Pos.	GMI Modules	Card Qty.	Cable	Notes
FBM241c	8+8	TB-D5012-INV-001	12	D5093DD6000DD6031D D6032DD6037D + D5090SD5091SD5094S D5095SD5096SD5097S D5098SD5099S-108 D6002SD6003S	1	4	4 DI + 8 DO

#### 通用

I/O Cards	Card Ch.	TB Model	TB Pos.	GMI Modules	Card Qty.	Cable	Notes
FBM247 FBM248	8	TB-D5008-INV-005	8	D5093S-TBD5099S D6002SD6003SD6004S D6014SD6015SK D6016SKD6017SK-TB D6020SD6031SD6032S D6037SD6072S-109	1	1	